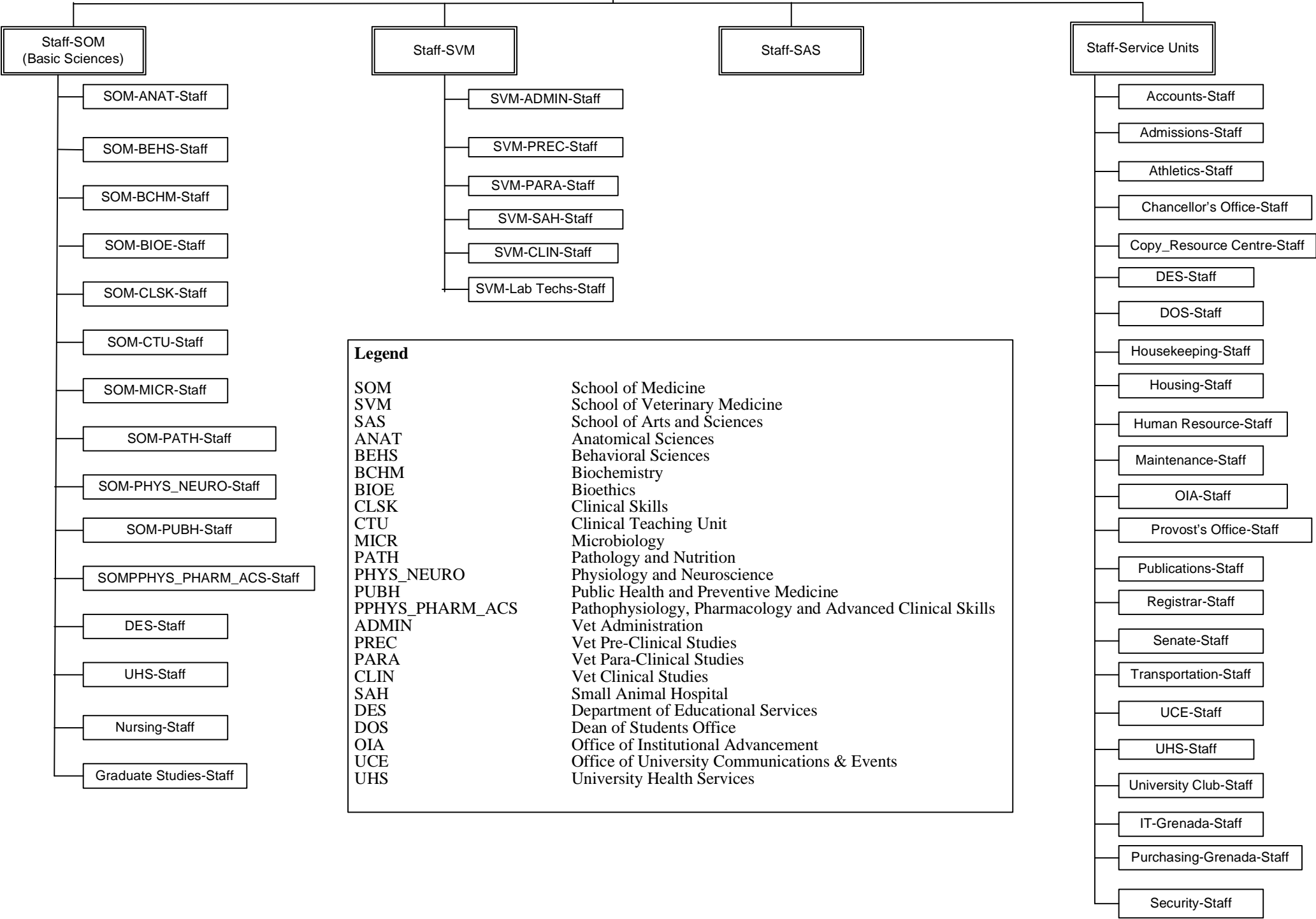


Lotus Notes Staff Groups

Staff-Grenada



Legend

SOM	School of Medicine
SVM	School of Veterinary Medicine
SAS	School of Arts and Sciences
ANAT	Anatomical Sciences
BEHS	Behavioral Sciences
BCHM	Biochemistry
BIOE	Bioethics
CLSK	Clinical Skills
CTU	Clinical Teaching Unit
MICR	Microbiology
PATH	Pathology and Nutrition
PHYS_NEURO	Physiology and Neuroscience
PUBH	Public Health and Preventive Medicine
PPHYS_PHARM_ACS	Pathophysiology, Pharmacology and Advanced Clinical Skills
ADMIN	Vet Administration
PREC	Vet Pre-Clinical Studies
PARA	Vet Para-Clinical Studies
CLIN	Vet Clinical Studies
SAH	Small Animal Hospital
DES	Department of Educational Services
DOS	Dean of Students Office
OIA	Office of Institutional Advancement
UCE	Office of University Communications & Events
UHS	University Health Services